

CONSUMER
SGS TESTING
SERVICES

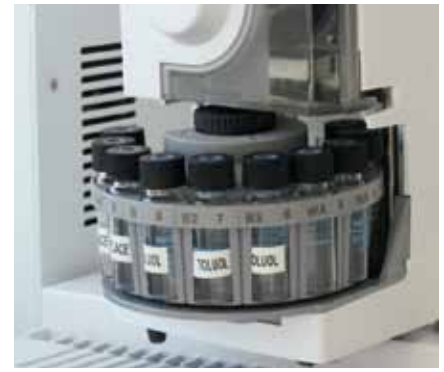


SERVICES

PESTICIDE ANALYSIS

INSTITUT
FRESENIUS

SGS



SERVICES PESTICIDE ANALYSIS

Worldwide considerably more pesticides are being used than permitted in the EU. We determine for producers, manufacturers or distributors which pesticides are found in raw materials or finished products and in which concentrations. It is standard for us to examine the compliance of threshold quantities pursuant to the European Regulation No. 396/2005. For products from controlled organic cultivation the evaluation is pursuant to the EC-Regulation on organic production or based on specific tolerance levels of organic associations.

As experts for residue analysis and for the legal evaluation of pesticide residues we apply the following methods:

MULTI-METHOD ASU L 00.00-115

For **fruit & vegetables, tea (Camellia sinensis), various fruit teas and grains & legumes** we offer the following range of pesticides:

- **Basic:** GC basic range
- **Complete:** comprehensive GC and LC range with more than 350 substances, including carbendazim/benomyl
- **Complete 400:** complete range + carbamates, roughly 400 substances
- **Complete 500:** complete range + carbamates + phenylurea herbicides and other substances
- **Complete QS:** compliant with the requirements for the QS multi-method for fresh fruit and vegetables

MULTI-METHOD ASU L 00.00-34

We offer the advanced method DFG S19 for **oils & fats, high-fat foods (e.g. nuts), herbs & spices and further complex matrices:**

- **Basic:** GC basic range
- **Complete:** comprehensive GC and LC range

We also offer further investigations and analyses, which we adapt to suit your individual requirements.

INDIVIDUAL AND GROUP METHODS

- **Dithiocarbamate:** fruit, vegetables, tea, herbs
- **Inorganic complete bromide:** grains, vegetables, dried fruit, nuts
- **Chlormequat/Mepiquat:** grains (wheat, oats), fruit (pears), mushrooms
- **Ethephon:** fruit (especially pineapple), grains
- **Glyphosate/AMPA:** grains and legumes, tea
- **Maleic acid hydrazide:** potatoes, onions
- **Pentachlorophenol:** tea, herbal and fruit tea
- **PCB (not WHO):** animal products, vegetable oils and fats
- **Phosphine (Monophosphane):** grains, fodder, dried fruit, nuts
- **Acidic herbicides:** grains and legumes, herbs, fruit
- **Toxaphene:** animal fats, fish, cotton
- **Dodine:** apricots, pome, peaches
- **Fosetyl-AI:** fruit, vegetables, herbal tea

SGS INSTITUT FRESENIUS GmbH

Tegeler Weg 33
 D-10589 Berlin
 t +49 30 34607 - 700
 f +49 30 34607 - 710
 e berlin3@institut-fresenius.de
 www.institut-fresenius.de

